



Advancing a
Healthier Wisconsin
Endowment

ANNUAL REPORT 2021

For the period of July 1, 2020 – June 30, 2021



AW ADVANCING A HEALTHIER
WISCONSIN ENDOWMENT

Table of Contents

3/ About AHW

5/ Message from the Director

6/ Year in Review

8/ Response to COVID-19

12/ Funding Pathways

14/ Basic, Clinical, & Translational Research

18/ Education & Workforce Development

22/ Population & Community Health Studies

26/ Policy, Systems, & Culture Change

28/ Ongoing Commitments and Impact

30/ Programming

32/ Public Stewardship

34/ Oversight & Operations

36/ Fund Management & Financials

40/ Our Team

ABOUT AHW

Propelling the most promising work and ideas for a healthier Wisconsin today and for generations to come

The Advancing a Healthier Wisconsin Endowment (AHW) is a statewide health philanthropy established by the Medical College of Wisconsin through a generous gift from Blue Cross & Blue Shield United of Wisconsin to serve as a resource for health improvement efforts across Wisconsin.

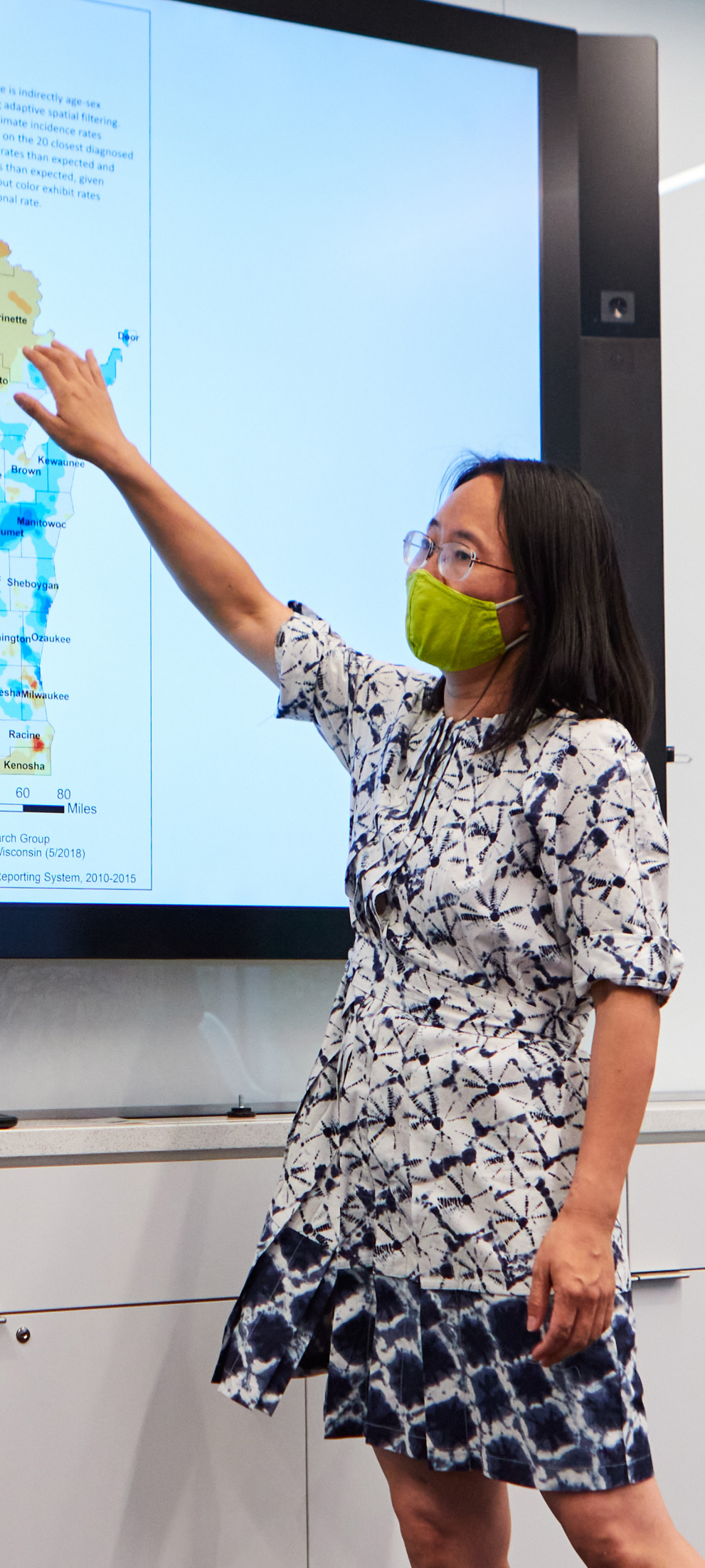
OUR MISSION:

Working with our partners, AHW will serve as a catalyst for positive change in the health of Wisconsin communities.

OUR VISION:

Advancing Wisconsin to be the healthiest state in the nation.





“The COVID-19 pandemic has highlighted and deepened health inequities and disparities...yet it has not changed our unwavering commitment to the people of Wisconsin.”

Dr. Jesse Ehrenfeld - AHW Director



A MESSAGE FROM THE DIRECTOR

Dear residents of Wisconsin,

On behalf of the Medical College of Wisconsin (MCW) and the MCW Consortium on Public and Community Health (Consortium), I am pleased to present the Fiscal Year 2021 Advancing a Healthier Wisconsin Endowment (AHW) Annual Report.

This report highlights a year of progress under our 2019-2023 Five-Year Plan. During this past fiscal year, we have deepened our commitment to improving health and advancing health equity in Wisconsin through the investment of nearly \$12 million into 25 new projects and support of more than \$127.5 million in active funding awards that have made the work of 103 projects possible.

Alongside these investments, we furthered our efforts to serve as a resource to those working to improve health across the state, reaching beyond grant awards to continue and launch new programming aimed at building the capacity and expanding the reach of partners across the state.

As you view the progress supported during this fiscal year, I must extend a sincere thank you to Genyne Edwards, JD, and Christopher Kops, MBA, CPA, for their years of dedication and service to the people of Wisconsin as members of our public oversight board, the MCW Consortium on Public and Community Health. As Ms. Edwards' and Mr. Kops' terms ended in December 2020, we were fortunate to welcome the experience and expertise of Stephanie Harrison, MA, and Ian B.K. Martin, MD, MBA, to the Consortium as they began their terms in January 2021.

I am also thrilled to have announced during this reporting period the appointment of Ugwuji N. Maduekwe, MD, MMSc, MPH, to serve as AHW Deputy Director, adding to the stellar team of staff who are dedicated to making Wisconsin a healthier place to live.

Since issuing our first funding awards in 2004, we have been driven by a vision for a healthier Wisconsin. Today, the COVID-19 pandemic has changed the landscape of health in Wisconsin. It has highlighted and deepened the health inequities and disparities that those of us across philanthropy, health care, and public and community health are challenged to address. Yet it has not changed our unwavering commitment to the people of Wisconsin.

So, as we reflect on progress, we are also looking to the future, ensuring that we are poised to continue to support efforts to improve health and advance health equity today, and for generations to come.

Sincerely,

Jesse M. Ehrenfeld, MD, MPH, FASA, FAMIA

Senior Associate Dean and Director

Advancing a Healthier Wisconsin Endowment

Professor, Anesthesiology

Medical College of Wisconsin



Year in Review

July 1, 2020 - June 30, 2021

At AHW, we are driven by a vision of a healthier Wisconsin. Since issuing our first funding awards in 2004 through June 2021, we have invested more than \$307 million into over 515 projects, supporting Wisconsin's health innovators, collaborators, and problem solvers to advance research that improves lives, to build education and workforce development programs and pathways, and to partner in communities statewide to create real change.

During this reporting period, we moved into our second full year under our 2019-2023 Five-Year Plan, furthering our investments into promising work and ideas across four funding pathways, while also responding to the COVID-19 pandemic and long-standing needs to advance health equity.

Highlights of this fiscal year include:

- The award of nearly **\$11.7 million to 24 projects** across three of our funding pathways, investing **\$2.5 million** in Basic, Clinical & Translational Research, **\$4 million** in Education & Workforce Development, and **\$5.2 million** in Population & Community Health Studies while continuing to support 19 active projects through our Policy, Systems, and Culture Change pathway
- The award of **\$230,000 in new funding** to support COVID-19 response while enabling 17 COVID-19 rapid response projects to successfully complete their funded work
- The continuation of the Advancing Behavioral Health Initiative, a **\$20 million commitment** to 10 community-led coalitions and one MCW academic team that are responding to the mental and behavioral health needs of communities across Wisconsin
- The growth of the Community and Cancer Science Network as it entered its third year of a five-year, **\$1.6 million award** and launched two new projects aimed at eliminating breast and lung cancer disparities supported by **\$3.1 million** in funding



Total New Investments

Fiscal Year 2021

- Community = \$4.3 million
- Research = \$4.8 million
- Education = \$2.9 million

In addition to our investments, we expanded our work to build the capacity and reach of partners working to improve health statewide by:

- Continuing our **AHW Technical Assistance Provider Program** and **Grantee Learning Events**, supporting funded partners with additional technical assistance and capacity-building opportunities to maximize their project's success and impact
- Joining forces with five Milwaukee-based funders and grantmakers to form the **Greater Milwaukee Partnership** program with Catchafire, a national organization matching skills-based virtual volunteers with nonprofit organizations to build the capacity of organizations to meet the critical needs of the communities they serve
- Launching **Coffee Conversations with Scientists**, a new, virtual experience developed in partnership with the Medical College of Wisconsin to bring accurate health and science information to the public

FISCAL YEAR 2021 BY THE NUMBERS

\$11,988,192 in new funding
awarded **to 25 projects**

103 active projects supported,
representing more than **\$127.5
million** in funding that is advancing
research, education and workforce
development, and community health
improvement initiatives

43 projects completed

RESPONSE TO COVID-19



In early February 2020, Wisconsin's first confirmed case of COVID-19 was announced. By mid-March, the number of confirmed cases in the state had begun a slow climb before rapidly increasing.

In response, AHW awarded **\$4.8 million** to **17 projects** in April 2020. During this reporting period, these projects completed their work, having supported outreach and communication to high-need populations in both rural and urban areas of Wisconsin, established expanded access to resources and care, and launched and studied innovative technologies and potential treatments for COVID-19.

As the COVID-19 pandemic extended, we awarded **\$230,000 in new funding**, while also working to identify where AHW investments could best support critical COVID-19 response needs, improve health of Wisconsinites, and advance health equity.

\$230,000 in
new funding
to support
Wisconsin's
response to
COVID-19

INVESTMENTS*

PROJECT NAME & AWARD	PROJECT AIM	PRINCIPAL INVESTIGATOR
Building COVID-19 Vaccine Confidence Through an Equity Lens	Increasing individual action to ensure 80% of Milwaukee County adults are vaccinated against COVID-19	Ben Weston, MD, MPH, Emergency Medicine
\$230,000		
5/1/2021 – 10/31/2021		

Find more information on AHW-funded projects, including additional community and academic partners, at ahwendowment.org/fundedprojects

**One additional project, “The Mask or Respirator Evaluation (MORE),” received funding approval, but was not initiated. Approved funds were returned to the Endowment.*

COMPLETED PROJECTS

- 3-D Printed Protective Gear: Solution to Anti-Viral Mask Shortages in Hospitals and Law Enforcement
- Convalescent Plasma for Treatment of Patients with COVID-19
- Dynamic, Responsive Spatiotemporal Epidemiologic Intelligence to Support Decision-Making in Milwaukee
- Educating the Hmong Community About COVID-19
- Education and Empowerment for Wisconsin Migrant Seasonal Agriculture Workers
- Effect of PPE on Incidence of COVID-19 in a Ventilator Capable Nursing Home
- GLITC COVID-19 Emergency Management Assistance for Wisconsin Tribes
- Implementing Telehealth Solutions in Wisconsin’s Free and Charitable Clinics
- Intervention to Prevent the Spread of COVID-19 in Elderly African-Americans in Milwaukee
- Locally Manufactured PPE (Personal Protective Equipment) & Other Medical Equipment
- Mobilizing 1,000 Community Social Media Influencers for COVID-19 Prevention, Care, and Coping
- Powered by 211: A Multi-Faceted Approach to Preventing Spread of COVID-19 in Wisconsin
- Reducing the Transmission & Impact of COVID-19 on Wisconsin’s Transgender Community
- Rural Health Education and Community COVID-19 Response
- STOP COVID-19: Co-design Culturally Relevant Risk-Reduction Communication for Vulnerable Communities
- Using Behavioral Nudges to Improve Preventive Health Behaviors That Limit COVID-19 Spread

Find more information on each completed project, including a summary of outcomes, at ahwendowment.org/fundedprojects

ONGOING RESPONSE & RECOVERY

Engaging Partners in Health Improvement, Identifying Needs

Throughout December 2020 and January 2021, AHW reached out to more than 250 community and health leaders across Wisconsin as well as at leading organizations nationally with a goal of better understanding where current needs in Wisconsin's COVID-19 response were and where philanthropy could best respond. As the federal government was launching its vaccine roll-out, leaders cautioned that needs would rapidly change, encouraging those in grantmaking to step forward where needs would arise, while continuing critical funding around other priority health issues so that other health needs across Wisconsin would not lose support.

Bringing Insight to Partners in Philanthropy & Grantmaking

On February 4, 2021, AHW brought this insight to other grantmakers, hosting a virtual roundtable called "Philanthropy Leads: The Role of Funders in Wisconsin's COVID-19 Response & Recovery" in partnership with the Wisconsin Philanthropy Network. The event welcomed health leaders and Wisconsin grantmakers representing 59 different organizations to discuss where support was most needed in Wisconsin's ongoing response to COVID-19. The event featured keynote speaker Cara V. James, PhD, president and CEO of Grantmakers in Health, and a panel of leaders on the front lines of Wisconsin's response who shared their perspectives, experiences, and expertise.

Wisconsin Public Health Association Recognizes Work of AHW-Funded Partners

In May 2021, the Wisconsin Public Health Association announced its annual awards for excellence across public health in Wisconsin, recognizing two AHW-funded COVID-19 response project partners for their impactful work in the following categories:

Excellence in Public Health Media Award: Awarded to Dawn Yang of Nyob Zoo Milwaukee TV, partner in the AHW-funded Educating the Hmong Community About COVID-19 project, for the work to lead Wisconsin's Hmong-language news broadcast in bringing accurate, up-to-date information to Hmong populations across the state.

Excellence in Public Health Research Award: Awarded to Laura Waldvogel, MEd, CEO of Family Health La Clinica in recognition of the work to lead a coalition in developing COVID-19 education, resources, and guidance for migrant and seasonal agricultural workers and their Wisconsin employers through the AHW-funded "Education and Empowerment for Wisconsin Migrant Seasonal Agricultural Workers" project.



PROJECT HIGHLIGHT: Educating the Hmong Community About COVID-19

(\$33,290 | Award Period: 4/10/2020 – 7/9/2020)

In spring 2020, as COVID-19 spread around the globe, the latest public health recommendations were coming at a rapid pace to the public. In any native language, trying to absorb it all was overwhelming. Now, imagine trying to digest that flood of information in your second language, or one that you don't speak or read at all. That was the exact challenge facing many of Wisconsin's Hmong residents in spring 2020.

Wisconsin is home to the third largest Hmong population in the United States. Among the top 10 metro areas in the U.S. for Hmong residents, three are in Wisconsin: Milwaukee, Wausau, and Sheboygan. A significant number of Hmong people also call La Crosse, Appleton, and Green Bay home.

At the onset of the pandemic, organizations across the Hmong community, particularly the Hmong American Friendship Association (HAFA), recognized that their fellow residents needed to understand how to protect themselves and their families from COVID-19. But they needed an approach that went beyond standard translations of print materials, relied on the Hmong tradition of oral communication, and came from trusted sources.

Supported by an AHW COVID-19 response funding award, HAFA and partners collaborated with Nyob Zoo Milwaukee TV – the first Hmong-language local news to broadcast in Wisconsin – to rapidly produce a series of Hmong-language videos that provided education and information about early COVID-19 information and recommendations.

The videos, disseminated widely through broadcast and social media platforms, have spurred ongoing education and awareness efforts.

PATHWAYS FOR PARTNERS

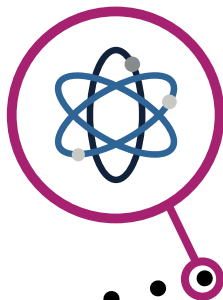
In fiscal year 2021, AHW continued to advance the funding strategies called for in our 2019-2023 Five-Year Plan by issuing funding awards across four pathways. Through each, we invite Wisconsin's innovators, collaborators, and problem-solvers to bring new ideas and solutions forward to improve health and advance health equity in Wisconsin.

These funding pathways are propelling promising work and ideas across a spectrum of health – from cells to society – spurring innovation and discovery that extends from research laboratories to communities in all corners of the state.

These investments support partners in bringing new ideas and solutions forward to build a healthier Wisconsin today, and for generations to come.

Basic, Clinical, and Translational Research

Driving research discoveries by advancing the work of biomedical researchers to translate research from the lab bench to patient bedside to community and back, creating the new knowledge necessary to address Wisconsin's health needs.



Education and Workforce Development

Transforming the landscape of the health research, health care, and community health workforce by supporting efforts that develop and grow a workforce that is poised to meet the diverse and evolving needs of Wisconsin residents now and for generations to come.





Celebrating the Generosity and Leadership of our Donors

In grateful recognition of our alumni, friends, and community benefactors whose outstanding generosity demonstrates a commitment to ensuring that high-quality healthcare is available today and for generations to come. The individuals, corporations, and foundations dedicated here made gifts to MCW through June 30, 2015.



Population and Community Health

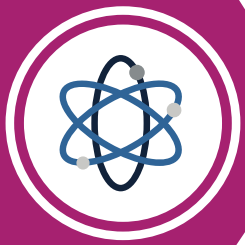
Moving findings to action by facilitating the creation of actionable knowledge needed to inform effective programs, policies, and practices that can address the root causes of poor health outcomes in Wisconsin.



Policy, Systems, and Culture Change

Weaving good health for all into the fabric of communities by enabling partners to challenge and change complex policies and systems to make good health practical and available to everyone in Wisconsin.





BASIC, CLINICAL, AND TRANSLATIONAL RESEARCH

FOCUS ON

propelling promising work and ideas across biomedical research to increase discovery, accelerate the translation and dissemination of new knowledge, and develop effective and sustainable research partnerships.

PARTNERING FOR CHANGE

with basic science, clinical, and translational researchers at the Medical College of Wisconsin to advance the research and clinical care necessary to improve health in Wisconsin communities.

CREATING OPPORTUNITIES FOR IMPACT

in Wisconsin's biomedical research landscape by:

- Investing grant dollars in innovative research and strategic partnerships that contribute to greater understanding of, and an increased capacity to address, the biological and genetic factors that influence health
- Connecting basic, clinical, and translational investigators through programming to educate around Wisconsin's health needs and facilitate the sharing of ideas and resources
- Influencing progress through both funding awards and programming initiatives that enhance skills and abilities of those involved in health research in Wisconsin

PRODUCING OUTCOMES FOR A HEALTHIER WISCONSIN

by developing innovative research and discovery, translating and disseminating new knowledge, and promoting effective partnerships.

COMPLETED PROJECTS

- Cancer Biology (CB)
- Defining the Nature and Extent of Nervous System Trauma and its Modifications: New Strategies
- Determining the Phenotype of Airway Collapse in Obstructive Sleep Apnea
- Development of Predictive Test for Chemotherapy Selection for Individual Pancreatic Cancer Patients
- Functional Pain and Autonomic Disorders (FPAD) Program Development
- Hematologic Malignancy & Transplantation (HMT)
- Mechanisms of Accumulating Damage from Repetitive Subconcussive Head Impacts in Contact Sports
- Neurophysiological Effects of Mild Traumatic Brain Injury (mTBI)
- Population Sciences (PS)
- Randomized Controlled Trial for the Treatment of NAAT+/Toxin-Clostridium Difficile Infection
- Targeting Cannabinoid CB1/CB2 Receptors for Neuroprotection in Mouse Models of Parkinson's Disease
- Tumor Progression & Metastasis (TPM)

Find a listing of each completed project with a summary of outcomes at ahwendowment.org/fundedprojects

\$2.5 MILLION FUNDED IN FY21

INVESTMENTS*

PROJECT NAME & AWARD	PROJECT AIM	PRINCIPAL INVESTIGATORS
BCG Boosted CAR-T Cell Therapy to Treat Bladder Cancer \$250,000 7/1/2020 – 7/31/2021**	Developing novel cancer immunotherapy to eradicate primary bladder cancer and protect from recurrence and metastasis	Weiguo Cui, PhD, MCW Department of Microbiology and Immunology
Bridging the Gap in Translational Vascular Research \$250,000 5/1/2021 – 4/30/2023	Establishing a collaborative research environment supporting the efficient collection and study of tissue containing micro vessels to improve understanding and prevention of heart disease	Julie K. Freed, MD, PhD, MCW Department of Anesthesiology
Cancer Disparities Curriculum for Research and Community Scholars \$1,010,889 10/1/2020 – 9/30/2025	Developing and piloting an initiative to address misunderstanding and mistrust between community members and biomedical researchers	Carol Williams, PhD, MCW Department of Pharmacology and Toxicology; Deborah Thomas, DDiv, House of Grace Ministry
The Role of LLGL1 in Cardiac Development and Regeneration \$250,000 7/1/2020 – 6/30/2022	Advancing understanding of how the Hippo-Yap pathway can be regulated at a molecular level to inform therapeutic targets for patients with progressive heart failure	Brian A. Link, PhD, MCW Department of Cell Biology, Neurobiology and Anatomy
A Translational Study of Epigenetic and Neural Mechanisms of Risk Phenotypes for PTSD \$250,000 7/1/2020 – 12/31/2022	Applying novel strategies to identify risk for chronic PTSD and understand risk profiles of patients to develop screening and intervention approaches	Gwen Lomberk, PhD, MCW Department of Surgery

Find a listing of each project's additional partners in AHW's online funded project database at ahwendowment.org/fundedprojects

*Projects "Cardiometabolic Effects of Artificial Sweeteners in Susceptible Type 1 Diabetes Populations" and "Relationship Between Resting Metabolic Rate, Body Weight, and Gut Microbiome in African-Americans" received funding approval, but project work was not initiated. Approved funds in the amount of \$250,000 each were returned to the Endowment.

**Project received funding approval through June 2022, however project ended early and unspent funds were returned to the Endowment.

PROJECT HIGHLIGHT:

Mechanisms of Accumulating Damage from Repetitive Subconcussive Head Impacts in Contact Sports

(\$199,022 | Award Period: 1/1/2019 –6/30/2021)

As many as 3.8 million sports-related concussions occur annually in the United States, resulting in more than 200,000 trips to the emergency department and serious long-term health impacts to critical brain functions like memory, judgement, speech, and muscle coordination.

While the long-held understanding of how a concussion occurs has been based on a single head impact injury, such as a blow to the head from a car accident or the high-speed collision of two athletes, new data has pointed to a second, more subtle, cause of concussion: high numbers of smaller, repetitive head impacts sustained over time.

Called a subconcussive impact, these smaller impacts often don't result in the same treatment and response as a single head-impact injury. So, they accumulate in the body, producing long-term health impacts. Yet exactly how these smaller impacts accumulate – and how to prevent this buildup – has not been well understood.

Supported by an **AHW Basic, Clinical, and Translational Science funding award** aimed at supporting novel, early-stage research, MCW Professor of Neurosurgery and Biomedical Engineering **Brian Stemper, PhD**, led a cross-disciplinary team aiming to improve this understanding to spur prevention and protection of long-term health for athletes.

Focused on correlating behavioral changes, blood biomarkers, and brain structural changes to the severity of repetitive subconcussive head impact exposure, the team employed two strategies: Recreating the experiences of football players in a laboratory setting to study the experience on the field, while also analyzing blood samples for indicators of ongoing brain injury.

Preliminary data provided a wealth of new knowledge, including indications that while high levels of head impact exposure do produce concussion-like symptoms, the symptoms differ compared to a single head-impact injury.

With this preliminary data in hand, the research team aims to use this early-stage research to spur dissemination of these findings to advance prevention and further discovery that can protect health on the sports field, court, and rink, or beyond.







EDUCATION & WORKFORCE DEVELOPMENT

FOCUS ON

propelling promising work and ideas to develop and grow a health workforce that is increasingly accessible, equipped, and representative of the diversity of the community being served.

PARTNERING FOR CHANGE

with today's leaders, early career professionals, and the next generation of leaders across biomedical research, academic medicine, and community and public health.

CREATING OPPORTUNITIES FOR IMPACT

in the health research, health care, and community and public health workforce by:

- Investing grant dollars in viable solutions that support the development of educational programs, enhance cross-disciplinary networks, and boost existing or new workforce development efforts
- Connecting individuals, agencies, and programs across disciplines through programming that supports the sharing of ideas and knowledge
- Influencing action through both funding and programming that supports sustainable workforce solutions to better meet Wisconsin's evolving health needs

PRODUCING OUTCOMES FOR A HEALTHIER WISCONSIN

by strengthening community and academic capacity, cultivating leadership in public health and research, promoting effective partnerships, and supporting the development of effective programs, policies, and practices.

\$4.1 MILLION FUNDED IN FY21

INVESTMENTS

PROJECT NAME & AWARD	PROJECT AIM	PRINCIPAL INVESTIGATORS OR PRIMARY COMMUNITY ORGANIZATION
Health Career Path2Practice (P2P) Certificate: A Comprehensive Health Careers Exploratory Course	Developing a certificate program to introduce clinical, administrative, public health, and research roles in institutions of higher education across Wisconsin	Northeastern Wisconsin Area Health Education Center
\$389,065		
7/1/2020 – 6/30/2024		

PROJECT NAME & AWARD	PROJECT AIM	PRINCIPAL INVESTIGATORS OR PRIMARY COMMUNITY ORGANIZATION
<p>Learning Event Support: The Public Health Significance of Racism</p> <p>\$3,860</p> <p>2/5/2021 – 6/5/2021</p>	<p>Bringing together Wisconsin's health workforce to discuss how racism and race/ethnicity impact health, access, and experience</p>	<p>University of Wisconsin-Milwaukee</p>
<p>MCW-CW Advocates in Medicine Pathway: Promoting Inclusion of Rural and Hmong Students in the Physician Workforce</p> <p>\$398,561</p> <p>7/1/2020 – 6/30/2024</p>	<p>Developing a pathway to facilitate the entry of undergraduates from rural and Hmong backgrounds into the medical degree program</p>	<p>Amy J. Prunuske, PhD, MCW Central Wisconsin</p>
<p>Medical Assistant Accelerated Pathway to Employment Training (MAAPET)</p> <p>\$398,581</p> <p>7/1/2020 – 6/30/2022</p>	<p>Developing, piloting, and evaluating an accelerated training program to increase a diverse talent pool of medical assistants working in ambulatory clinics across southeast Wisconsin</p>	<p>Employ Milwaukee</p>
<p>Mentored Career Development Program: Innovative Team-Based Transdisciplinary Approach to Research Education and Training</p> <p>\$2,465,245</p> <p>2/1/2021 – 5/31/2026</p>	<p>Creating a team-based, transdisciplinary training model to support a workforce prepared to conduct T1-T5 research involving community, research infrastructure, and health system perspectives</p>	<p>Reza Shaker, MD, Clinical and Translational Science Institute of Southeast Wisconsin</p>
<p>Planning for the Wisconsin Alcohol Policy Project</p> <p>\$32,403</p> <p>3/1/2021 – 7/31/2021</p>	<p>Determining gaps in data related to alcohol use, misuse, and policy to guide alcohol work in Wisconsin</p>	<p>Terri A deRoos-Cassini, PhD, MS, MCW Comprehensive Injury Center</p>
<p>System of Wellness Instruction for Teachers and Teens (SWIFTT)</p> <p>\$400,000</p> <p>7/1/2020 – 6/30/2024</p>	<p>Developing a platform aimed at shifting health, physical education, and wellness education to promote lifetime wellness education</p>	<p>Milwaukee Board of School Directors</p>

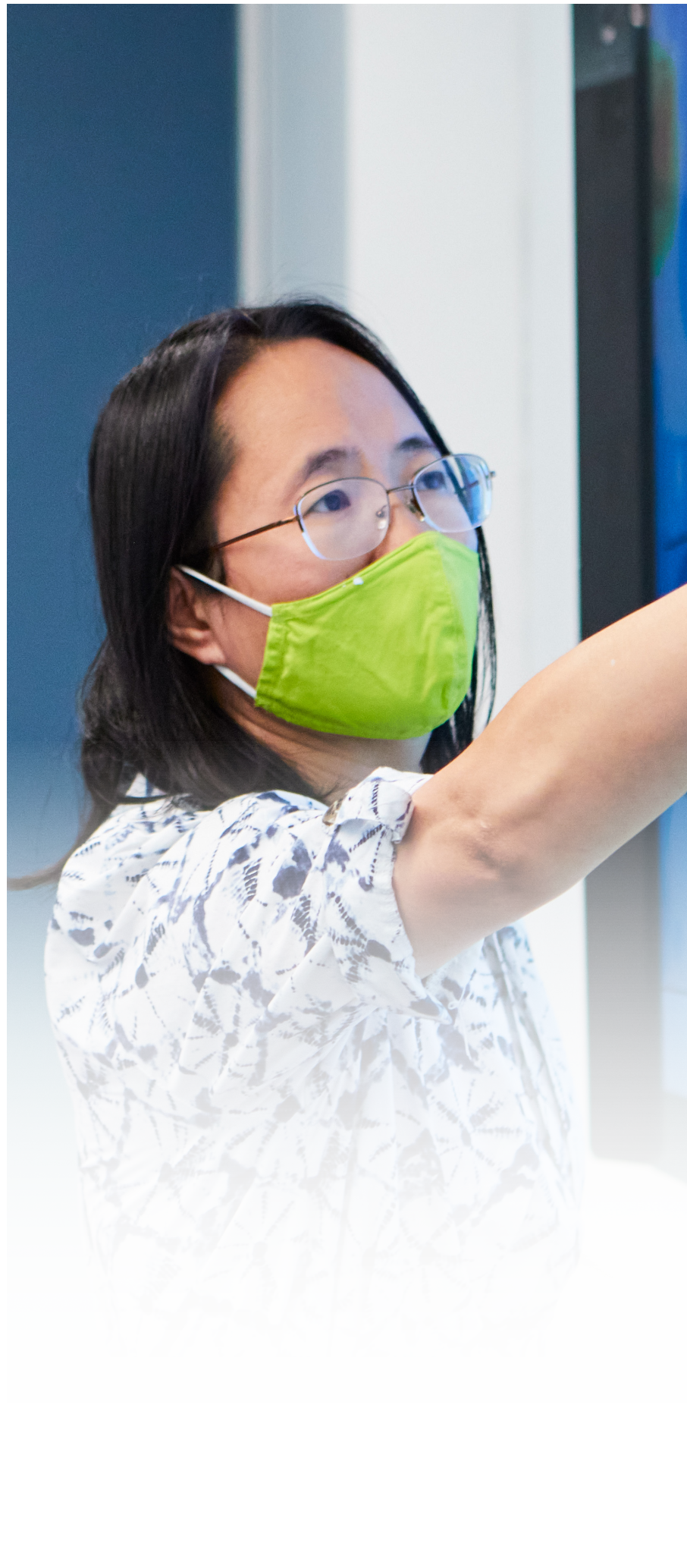
Find more information on AHW-funded projects, including additional community and academic partners, online at ahwendowment.org/fundedprojects

COMPLETED PROJECTS*

- Cancer Center Infrastructure Grant
- Learning Event Support: 2020 Annual Public Health Conference
- Learning Event Support: The Public Health Significance of Racism
- Learning Event Support: Wisconsin Physical/Occupational Therapist Symposium on Pediatric Chronic Pain and Obesity. Treating Children and Teens with Obesity: What do Physical/Occupational Therapists Need to Know?
- MCW Community Engagement CORE Implementation Initiative
- Preceptor Award: AUTO-TBI – Autonomic Function After Concussion
- Preceptor Award: Identification of the Regeneration Competent Cardiomyocyte in Mouse and Man
- Preceptor Award: Targeting JAK2-STAT5 Signaling in Apalutamide-Resistant Prostate Cancer
- StEP-UP: Student Enrichment Programs for Under-Represented Professions in Medicine

Find more information on each completed project, including a summary of outcomes, at ahwendowment.org/fundedprojects

*Projects “Learning Event Support: Creative Care Institute” and “Learning Event Support: 2020 PATCH Symposium: Best Practices in Adolescent Health Care” received funding approval in fiscal year 2020, however project work was not initiated. Approved funds were returned to the Endowment.



PROJECT HIGHLIGHT:

Project Highlight: MCW-Central Wisconsin Advocates in Medicine Pathway

(\$398,561 | Award Period: 7/1/2020 – 6/30/2024)

In 2016, the **Medical College of Wisconsin's Central Wisconsin (MCW-CW)** campus opened its doors with a mission to train community-focused physicians to meet the health care needs of central Wisconsin residents.

Today, the school is doing just that, each year enrolling new classes of students and graduating three classes into residency programs within Wisconsin and across the U.S. Yet, like medical schools nationwide, MCW-CW faces a challenge: While the number of medical school applications continues to increase, diversity among applicants has not seen similar increases.

It's a challenge that MCW-CW is stepping forward to address through a community-focused lens. With the support of an **AHW Education & Workforce Development funding award**, MCW-CW launched the MCW-CW Advocates in Medicine Pathway (AMP), a program to support local students with diverse backgrounds on the rigorous training path into and through medical school.

It's part of a "grow your own" model which suggests that the best strategy to increase the number of Wisconsin physicians is to reach students from the region and encourage enrollment into local medical school programs.

Studies have shown that students who go to a Wisconsin medical school and complete a Wisconsin residency are significantly more likely to stay in the state to practice medicine. But for students who are traditionally underrepresented in medicine (URiM), including those with rural backgrounds, the path into medical school may not be clear.

Leaning on previous experience developing programs to support the inclusion of underrepresented students, the project's principal investigator, Associate Professor **Amy Prunuske, PhD**, is working alongside MCW-CW colleagues and a community advisory board to rethink their approach.

The program's initial design will identify 10 URiM students at the University of Wisconsin-Stevens Point at Wausau, and provide support through advising and mentorship, training and educational experiences, and social connections that will translate into successful medical school applications and success throughout their education and training.

While the behind-the-scenes work to design the program has launched, the program's initial announcement resulted in a stream of interest from both community partners and potential students alike. It's a critical step toward ensuring that the next generation of health care practitioners are representative of and prepared to serve central and northern Wisconsin communities, and impact the health of the entire region.



POPULATION & COMMUNITY HEALTH STUDIES

FOCUS ON

propelling promising work and ideas in population and community health studies to establish evidence and build resources that can inform programs, policies, and practices to advance health equity in Wisconsin.

PARTNERING FOR CHANGE

with public and community health professionals and Medical College of Wisconsin researchers.

CREATING OPPORTUNITIES FOR IMPACT

by enabling our partners to develop promising practices by:

- Investing in grant awards that support multi-sector, multi-stakeholder collaborations that produce actionable knowledge
- Connecting researchers and communities through programming that seeks solutions through collaboration
- Influencing action by enabling our partners to develop the evidence and resources they need to develop measurable, replicable, and scalable approaches to Wisconsin's complex health needs

PRODUCING OUTCOMES FOR A HEALTHIER WISCONSIN

by developing innovative research and discovery, translating and disseminating new knowledge, and developing effective programs, policies, and practices.

\$5 MILLION FUNDED IN FY21

INVESTMENTS

PROJECT NAME & AWARD	PROJECT AIM	PRINCIPAL INVESTIGATORS OR PRIMARY COMMUNITY ORGANIZATION
Best Practices for Smoking Cessation for Milwaukee Public Housing Residents \$393,627 10/1/2020 – 9/30/2023	Comparing the effectiveness of two types of on-site support groups aimed at supporting residents to quit smoking	Jeffrey M. Engelmann, PhD, MCW Department of Psychiatry and Behavioral Medicine
Clean Air Interventions for Milwaukee Child Cares \$400,000 10/1/2020 – 3/31/2023	Studying Milwaukee County child care centers to assess indoor air quality, relevant behaviors, and the effectiveness of interventions	Joshua A. Steinberg, MD, MCW Department of Pediatrics

PROJECT NAME & AWARD	PROJECT AIM	PRINCIPAL INVESTIGATORS OR PRIMARY COMMUNITY ORGANIZATION
Clinical and Community Solutions to Lead-Free Children \$400,000 10/1/2020 – 9/30/2023	Improving the identification of children with elevated blood lead levels and increasing connectedness between the clinical enterprise, public health, community response, and parental engagement	David A. Nelson, PhD, MCW Department of Family Medicine
Impacts of Nature in Proactive and Responsive Behavioral Health Treatment of Urban Latino Youth \$400,000 10/1/2020 – 9/30/2023	Evaluating the impact of enhanced nature- based behavioral therapy for urban Latino youth in Milwaukee	Sixteenth Street Community Health Centers
Improving Mental Health of Milwaukee's Latinx Population Through Increased Neighborhood Engagement \$350,715 10/1/2020 – 9/30/2023	Mobilizing a multisector partnership to address neighborhood challenges impacting the mental health of Spanish- speaking residents of Milwaukee Police District Two	CORE El Centro
Integrating Trauma Screening and SBIRT to Enhance W-2 Case Management Services \$400,000 10/1/2020 – 9/30/2023	Piloting the integration of trauma screening, brief intervention, and referral to treatment in W-2 participants' case management	Workforce Resource, Inc.
Remembering the Lost: How Investigation of Military Suicides can Improve Prevention Resources \$399,771 10/1/2020 – 9/30/2023	Investigating the difference in circumstances preceding military-involved suicides	Mental Health America of Wisconsin
Understanding the Role of Mammographic Quality in Wisconsin's Breast Cancer Disparities \$2,098,855 4/1/2021 – 3/31/2026	Developing a sustainable shared measurement system to identify and track factors perpetuating breast cancer disparities and informing best practices in mammographic quality	Wisconsin Women's Health Foundation; Joan M. Neuner, MD, MPH, MCW Department of Medicine
Wisconsin Violence Prevention Project \$216,000 3/1/2021 – 8/31/2022	Conducting planning and needs assessments to develop a statewide Wisconsin Violence Prevention Project	Terri A. deRoos- Cassini, PhD, MS, MCW Comprehensive Injury Center

Find more information on AHW-funded projects, including additional community and academic partners, at ahwendowment.org/fundedprojects

PROJECT HIGHLIGHT:

Remembering the Lost: Using Data to Prevent Veteran Deaths by Suicide in Wisconsin

(\$399,771 | Award Period: 10/1/2020 – 9/30/2023)

Each day across the United States, an average of 20 veterans or active military members die by suicide. In Wisconsin, from 2013 to 2017, veterans accounted for almost one out of every five suicide deaths.

It's a significant number, yet, according to those in the field, the data may not be capturing the full picture.

The need to quantify and describe the true burden of veteran suicide in Wisconsin has led a community-academic partnership between **Mental Health America of Wisconsin and the Medical College of Wisconsin's (MCW) Comprehensive Injury Center** to gather a network of partners across the state to build evidence that will help shape efforts to prevent veteran and active-military deaths by suicide.

The collaborative project, supported by an **AHW Population & Community Health Studies funding award**, will combine novel approaches to improve data, identify gaps in the systems, and understand the life circumstances that are contributing to death by suicide in Wisconsin, engaging critical partners such as Wisconsin's medical examiners and coroners, and the friends and families of those who have died, in the process.

Alongside that work, they will make a unique comparison in cases: Looking at the veteran's discharge status to compare the experience and impact between those who were honorably discharged and those with other discharge ratings.

Pointing toward national statistics that show approximately 14 of the 20 veterans who die by suicide each day were not enrolled in VA health care, the team aims to understand why and what impact this may have. The ultimate goal is to identify opportunities for prevention and help, and to shape a healthier future for Wisconsin's veterans, active military, and their families.



COMPLETED PROJECTS

All Population & Community Health Studies pathway projects remained active during this reporting period.





POLICY & SYSTEMS CHANGE

FOCUS ON

propelling promising work and ideas to change the social, economic, health, and health care policies and systems that can create lasting, population-level health improvements across Wisconsin.

PARTNERING FOR CHANGE

with community-based nonprofit or government organizations that can lead collaborative, cross-sector coalitions.

CREATING OPPORTUNITIES FOR IMPACT

by supporting our partners in creating lasting changes in health outcomes by:

- Investing in grant awards that help community-led coalitions change the systems that influence how we live, work, learn, and play
- Connecting partners across sectors through programming that builds the skills and capacity for creating systems change
- Influencing long-term, sustainable change through both funding and programming initiatives that support the sharing of ideas and knowledge

PRODUCING OUTCOMES FOR A HEALTHIER WISCONSIN

by promoting effective partnerships, translating and disseminating new knowledge, and developing effective programs, policies, and practices.

INVESTMENTS

The AHW Policy, Systems, and Culture Change pathway did not have a FY21 funding cycle.

COMPLETED PROJECTS

- Adopting a Patient-Centered Prescription Label in Wisconsin
- Bringing Dispatcher-Assisted CPR Instructions to Every 9-1-1 Caller in Wisconsin
- Destination Zero: Reducing Suicide in Fond du Lac County
- Expanding Immunization Access Through Wisconsin's Community Pharmacies
- Implementation and Assessment of Standards of Excellence in Wisconsin's Free & Charitable Clinics
- Wisconsin Native American Tobacco Network Smoke-Free Housing Initiative

Find more information on each completed project, including a summary of outcomes, at ahwendowment.org/fundedprojects





PROJECT HIGHLIGHT:

Expanding Immunization Access Through Wisconsin's Community Pharmacies

(\$489,121 | Award Period: 1/1/2018 – 6/30/2021)

In December 2020, the U.S. achieved a major milestone in its response to COVID-19 when the U.S. Food and Drug Administration approved an emergency use authorization for the first COVID-19 vaccine.

In a matter of days, health care professionals began administering doses to eligible individuals. Included in those who jumped into action to provide vaccinations across Wisconsin were pharmacists, thanks to a multi-year statewide effort to expand access to vaccinations by enabling pharmacies to provide them.

Often open late and on weekends, pharmacies provide a convenient and local option for those seeking immunizations. Data shows that 93% of people in the U.S. live within five miles of a pharmacy. Although pharmacists have been providing some vaccines for decades, it wasn't until a 2019 Wisconsin state law that the ability to administer all approved vaccines was extended to pharmacists and pharmacy students.

With the new law serving as a foundation for expanded access, challenges remained to make the task of providing vaccinations at pharmacy locations not only possible, but available statewide.

Enter a community-academic partnership between the **Pharmacy Society of Wisconsin and the MCW Department of Family Medicine**. Supported by a multi-year **AHW Policy, Systems, and Culture Change funding award**, the project focused on creating the necessary changes to a complex system that extends far beyond the pharmacies themselves.

This project set out to develop consistent protocols and trainings for pharmacist-provided immunizations while also pursuing policy and system changes to enable efficiencies and sustainability of the work.

Today, Wisconsin is at the forefront of utilizing pharmacists to respond to the need to increase vaccination rates, and the collaboration is leveraging its reach to support pharmacies statewide in the critical, life-saving work of administering COVID-19 vaccinations, increasing Wisconsin vaccination rates, and improving health outcomes in the state for generations to come.

A photograph of four people (three men and one woman) engaged in a conversation outdoors. The woman on the left has long dark hair and is wearing a patterned top. The man next to her has short brown hair and glasses, wearing a dark suit jacket over a light blue shirt. The man next to him has grey hair and a beard, wearing a dark zip-up jacket. The man on the far right is seen from the back, wearing a patterned shirt. They are standing in front of a modern building with large glass windows. A blue banner is overlaid on the top right of the image.

ONGOING COMMITMENTS & IMPACT

Throughout fiscal year 2021, AHW supported the ongoing work of 103 active projects working to advance research that improves lives, to build education and workforce development programs and pathways, and to partner in communities statewide to create real change through more than \$127.5 million in active funding awards.

During this reporting period, active and completed AHW investments continued to make notable progress and accomplishments, including:

CROSS-CUTTING INITIATIVE: THE COMMUNITY & CANCER SCIENCE NETWORK

TITLE: Community and Cancer Science Network

FOCUS: Creating and sustaining an integrated hub to bring together community, research, and academics to tackle breast and lung cancer disparities and developing promising initiatives aimed at reducing disparities in breast and lung cancer across Wisconsin

AWARD: **\$4.8 million in active funding as part of a \$20 million multi-year allocation**

PROGRESS: In FY21, the project entered year three of a five-year, \$1.6 million award focused on creating and sustaining an integrated hub to coordinate across community, research, and academics while launching two initiatives that span multiple AHW funding pathways. These projects, supported by \$3.1 million in new funding, aim to develop and pilot a cancer disparities curriculum for research and community scholars and improve mammographic quality and breast cancer detection and survivorship in Wisconsin.

Find information about the Community and Cancer Science Network at ahwendowment.org/fundedprojects.

THE AHW ADVANCING BEHAVIORAL HEALTH INITIATIVE

TITLE: Advancing Behavioral Health Initiative

FOCUS: Advancing mental and behavioral health outcomes in 10 Wisconsin communities

AWARD: **\$12.7 million in active funding as part of a \$20 million multi-year allocation**

PROGRESS: In FY21, each of the 10 projects entered the fourth year of their implementation phase, carrying out work to impact health in their communities that took on even more importance as the COVID-19 pandemic impacted mental health needs statewide. Alongside their work, AHW continued to support the initiative partners through a unique learning community model. During this reporting period, the following learning community meetings were held virtually:

- October 2020: Learning tools to adapt strategies and manage progress during uncertain times, including the impact of the pandemic and social justice movement
- December 2020: Managing systems change efforts and using adaptive leadership skills to manage and support momentum of community coalitions
- March 2021: Setting goals and planning for sustainability
- May 2021: Identifying resources needed for implementing successful strategies

In May 2021, the Initiative also welcomed nationally renowned mental health leader Dr. Octavio Martinez of the Hogg Foundation for Mental Health in an open-to-the-public address on mental health and community support during the pandemic.

Find information on each funded ABH Initiative Project at ahwendowment.org/fundedprojects.

LAUNCHING DEGREE PROGRAMS TO GROW & TRAIN WISCONSIN'S HEALTH WORKFORCE

Since 2004, AHW funding awards have led to the creation of innovative curriculums for Medical College of Wisconsin-based degree, pipeline, and pathway programs. Through more than \$16.9 million in funding awards, 11 MCW degree and certificate programs have now launched or begun their development.

Funded Awards:

- Public and Community Health PhD Program (2005, \$40,000)
- Master of Public Health Distance Learning Program (2006, \$2,761,897)
- Public and Community Health PhD Program (2006, \$4,778,113)
- MCW Regional Campus Programs (2009-2010, \$5,294,195)
- MCW School of Pharmacy (2015, \$3,024,132)
- Anesthesia Master of Science Program (2015, \$969,426)
- Graduate Medical Education Development in Central & Northern Wisconsin (2016, \$369,060)
- Global Health Equity Master of Science Program (2019, \$488,683)
- Genetic Counseling Master of Science Program (2019, \$1,301,461)
- Master of Precision Medicine Program and Graduate Certificate in Precision Medicine Program (2020, \$518,120)
- Doctorate in Public Health (DrPH) Program (2020, \$702,478)

Achievements: Together, the programs have graduated more than **441** new health and science practitioners, with three programs launching their initial recruitment of students during this fiscal year.

PROGRAMMING

Going Further: Scaling & Expanding Programming to Grow Capacity & Reach

In implementing our 2019-2023 Five-Year Plan, AHW committed to taking steps to not only focus and respond in our grantmaking, but to “go further” beyond our investments.

Today, by scaling and expanding programming aimed at building the capacity and expanding the reach of those working to improve health across the state, AHW projects and partners are building the skills to solve Wisconsin’s health needs and reaching the residents statewide in entirely new ways.

SUPPORTING FUNDED PROJECT SUCCESS: AHW TECHNICAL ASSISTANCE PROVIDER PROGRAM

The AHW Technical Assistance Provider (TAP) Program connects eligible AHW-funded projects to top-notch, experienced consulting organizations and individuals upon request, bringing the content expertise and experience of these consultants to the work of each project.

Through the program, projects work with TAPs dedicated to their funded project’s specific needs, helping projects strategize solutions, overcome barriers, and maximize the success of their coalitions and collaborations as they drive toward successful outcomes for the health and people of communities across Wisconsin.

During this reporting period, more than 50% of active eligible projects engaged with an AHW technical assistance provider.

GROWING HEALTH IMPROVEMENT PARTNER CAPACITY: CATCHAFIRE

In 2021, AHW expanded our capacity-building offerings by joining forces with five Milwaukee-based funders and grantmakers to form the Greater Milwaukee Partnership Catchafire Program.

Working in collaboration with the national Catchafire organization, an online capacity-building service, the program is aimed at connecting nonprofits with skills-based, virtual volunteers who provide high-quality pro bono services across areas such as program management, finance and operations, marketing and communications, human resources, technology, fundraising, and more.

In June 2021, AHW joined the partnership, offering the service to 75 nonprofit partners.



EXPANDING THE REACH & VISIBILITY OF HEALTH & SCIENCE LEADERS: MCW COFFEE CONVERSATIONS WITH SCIENTISTS

Since 2016, AHW's free, public learning series, Conversations with Scientists, had regularly brought the research and expertise of MCW experts to the public as an in-person learning series. Following a temporary pause due to COVID-19, AHW brought the popular series back as a new virtual experience in April 2021.

Partnering with the Medical College of Wisconsin, the series was relaunched as a live, virtual series called Coffee Conversations with Scientists.

Each month, the series is aimed at exploring the science behind the health topics making news, bringing accurate health and science information to the public and building the capacity of health and science leaders to translate the latest in research into actionable information for Wisconsin residents.

During the fiscal year, the series launched with its first three episodes being viewed more than 6,000 times.

PUBLIC STEWARDSHIP

Since 2004, AHW has been provided with the extraordinary opportunity and responsibility to steward a generous financial gift on behalf of the people of Wisconsin. Today, we continue to advance our mission and purpose through effective oversight and management.

OVERSIGHT

AHW is an entity within the Medical College of Wisconsin's (MCW) School of Medicine. AHW's operations are led by an MCW faculty member, who also serves as a Senior Associate Dean in the MCW School of Medicine, and reports to the Dean of the School of Medicine. The Director provides oversight and day-to-day direction for AHW staff. Governance and oversight of AHW is provided by three entities: The MCW Consortium on Public and Community Health, the AHW Research and Education Advisory Committee, and the MCW Board of Trustees.



Jesse Ehrenfeld, MD, MPH*

Senior Associate Dean and
Director, Advancing a Healthier
Wisconsin Endowment
Professor, Anesthesiology, MCW



Genyne L. Edwards, JD*

Partner, P3
Development Group



**Elizabeth Giese, RN,
MSPH**

Health Officer/Director,
Eau Claire City/County
Health Department



Stephanie Harrison, MA*

Chief Executive Officer,
Wisconsin Primary Health
Care Association



Joseph E. Kerschner, MD

Provost and Executive Vice
President, Dean, School of
Medicine, MCW



Ian B.K. Martin, MD, MBA*

Professor and System Chair, Department
of Emergency Medicine, MCW
Emergency Medicine Physician-in-
Chief, Froedtert & Medical College of
Wisconsin Health Network



**Christopher P. Kops,
CPA, MBA***

Executive Vice
President for Finance &
Administration and Chief
Operating Officer, MCW



**John R. Raymond, Sr.,
MD**

President and Chief
Executive Officer, MCW



Rebecca Rice, MA

Chief Executive Officer,
NorthLakes Community
Clinic



Tony Shields, MSM

President & CEO,
Wisconsin Philanthropy
Network



**Joy R. Tapper, MPA
(Chair)**

Executive Director,
Milwaukee Health Care
Partnership

*Genyne L. Edwards, JD, and Christopher P. Kops, CPA, MBA, completed their terms on the Consortium in December 2020. Stephanie Harrison, MA, and Ian B.K. Martin, MD, MBA, began their terms in January 2021.

The AHW Research and Education Advisory Committee (REAC) provides oversight for AHW investments and support of MCW-led biomedical and population health research, as well as programs to enhance medical education opportunities for the health care and public health workforce.

AHW Research & Education Advisory Committee



Ivor Benjamin, MD

Director, Cardiovascular Center; Professor of Medicine, Physiology, Pharmacology and Toxicology, Cell Biology, Neurobiology and Anatomy, Surgery; Program Director, CVC T32 Training Program MCW



**Jesse Ehrenfeld, MD, MPH
(Chair)**

Senior Associate Dean and Director, Advancing a Healthier Wisconsin Endowment
Professor, Anesthesiology, MCW



Cecilia J. Hillard, PhD

Associate Dean for Research; Professor; Director, Neuroscience Research Center MCW



William J. Hueston, MD*

Senior Associate Dean for Medical Education and Associate Provost of Education MCW



Joseph E. Kerschner, MD

Provost and Executive Vice President, Dean, School of Medicine, MCW



**Christopher P. Kops,
CPA, MBA**

Executive Vice President for Finance & Administration and Chief Operating Officer, MCW



**Ann B. Nattinger, MD,
MPH, MACP**

Associate Provost for Research; Senior Associate Dean for Research, School of Medicine; Professor of Medicine, Lady Riders Professor of Breast Cancer Research MCW

*Term ended May 2021

The MCW Consortium on Public & Community Health (Consortium) formed in 2002 as a non-stock, nonprofit corporation whose purpose is to fulfill the obligations of the Public and Community Health Oversight and Advisory Committee as described in the March 2000 Order of the Insurance Commissioner of the State of Wisconsin. The Consortium provides oversight for AHW's investments and support of community and public health partnerships and projects, and serves in an advisory capacity for investments in research and education. The Consortium conducts itself in accordance with its bylaws and Wisconsin Open Meetings and Public Records laws.



OPERATIONS: OUR PROCESS

The MCW Consortium on Public and Community Health (Consortium) and AHW Research and Education Advisory Committee (REAC) follow standard request for application (RFA) processes, including a multi-stage application and review process for all funding awards. All full proposals are reviewed under AHW's supplanting requirements through the MCW Controller's Office prior to award commencement.

MCW-LED PROJECT (REP) APPLICATION PROCEDURES

The AHW Research and Education Program (REP) investment allocation is dedicated to advancing health through research and education initiatives. Supporting MCW-led research and education program funding awards, funds are distributed from AHW's REP investment allocation through a multi-level process that includes the submission of a letter of intent and full proposal. All letters of intent and full proposal submissions are screened by AHW staff to determine that all eligibility, content, and submission requirements are fulfilled, then are reviewed by the REAC for scientific merit and alignment with the AHW Five-Year Plan. Research and Education Program (REP) REAC-initiated proposals are received upon invitation and involve additional work with the AHW Scientific Consultant and AHW staff to ensure the proposal's alignment with AHW's mission and vision. MCW-led project proposals received through AHW competitive funding opportunities also receive review for scientific merit by review panels consisting of expertise relevant to the proposed research and funding pathway. MCW-led Preceptor awards are distributed in adherence to the resource allocation and review process approved by the REAC, including submission of a written application that undergoes AHW staff review and supplanting review prior to funding determination by the REAC. REAC-approved awards are advanced to the MCW Board of Trustees for final funding determination.

AHW's MCW-led Learning Event Support awards are distributed in adherence to the resource allocation and review process approved by the REAC. These smaller, rolling funding awards follow a review process that includes submission of a written application that undergoes AHW staff review and supplanting review prior to funding determination by AHW leadership.



COMMUNITY-LED PROJECT (HWPP) APPLICATION PROCEDURES

The AHW Healthier Wisconsin Partnership Program (HWPP) investment allocation is dedicated to community-academic partnerships for improved health. Supporting community-led funding awards, funds are distributed from AHW's HWPP investment allocation through a competitive application process that includes a multi-level review and assessment. All submissions are screened by AHW staff to determine that all eligibility, content, and submission requirements are fulfilled. Community-led project proposals begin with submission of brief proposals that go through a multi-level qualitative and quantitative assessment by an external merit review panel. Meritorious proposals are invited to submit a full proposal for review by an external merit review panel and funding determination by the MCW Consortium before advancing to the MCW Board of Trustees for final approval.

AHW's Community-led Learning Event Support awards are distributed in adherence to the resource allocation and review process approved by the Consortium. These smaller, rolling funding awards follow a review process that includes submission of a written application that undergoes AHW staff review and supplanting review prior to funding determination by AHW leadership.

AHW SUPPLANTING POLICY

As determined by the Order of the Insurance Commissioner of the State of Wisconsin, AHW funds may not be used to supplant funds or resources available from other sources. As such, AHW, via the MCW Controller's Office, conducts a review of all AHW funding awards for determination of non-supplanting in accordance with procedures approved by the Wisconsin United for Health Foundation, Inc. All full proposals approved during this reporting period were reviewed and approved for funding awards in accordance with the AHW Supplanting Policy.

EVALUATION OF PROGRAMS & PROJECTS FUNDED

Throughout the year, AHW evaluates the progress and outcomes of funded projects using regular progress and final reports as well as financial status reports and/or presentations, site visits, meetings, or subrecipient audits. Multi-year awards are reviewed for progress annually by the appropriate AHW oversight body. Project updates and outcomes are posted on our funded project listing at ahwendowment.org/fundedprojects.

FUND MANAGEMENT & FINANCIALS

FUND MANAGEMENT

The Advancing a Healthier Wisconsin funds are invested with the Medical College of Wisconsin Endowment Funds using a diversified asset allocation strategy that includes money market funds held by external investment managers, marketable debt and equity securities, bond and equity mutual funds, commingled bond and equity funds, other equity securities, and accrued interest and dividends thereon and are reported at fair value. The investment goal for the Advancing a Healthier Wisconsin funds, as approved by the Medical College of Wisconsin Board of Trustees, is to preserve the purchasing power of its investment, while providing a level of investment return and liquidity that funds its purposes within a reasonable and prudent level of risk. The Medical College of Wisconsin has a long-term investment objective for the endowment assets to earn on average a real (inflation adjusted) annual rate of return and to provide a return for appropriation of not less than the total annual spendable income rate under the endowment fund spending policy.

All Endowment Funds, including the Advancing a Healthier Wisconsin funds, are invested in a unitized pool. Pooling of funds allows an individual participating fund to benefit from diversification

and economies of scale in the investment process. Income is also unitized and allocated based on relative value on the first of the month. Realized capital gains are reinvested in the pool. The separate identity of each fund participating in the Endowment Fund pool is fully preserved, and each fund's share in the income and gains and losses of the pool is assured.

The Advancing a Healthier Wisconsin funds are segregated within the Endowment Fund. With respect to the 35% allocation of the funds for the Healthier Wisconsin Partnership

Program and the 65% allocation of the funds for the Research and Education Program, separate accounts for the endowed funds and the spendable income funds available for current and future program distribution are maintained.

Distributions are based on the MCW Endowment Fund Spending Policy. Investment earnings that are not distributed are restricted under the terms of the Grant Agreement.

FUND MANAGEMENT

A financial audit of The Medical College of Wisconsin, Inc. Advancing a Healthier Wisconsin Program was conducted by an external audit firm for the fiscal years ending June 30, 2021 and 2020.

The following pages reflect the financial position for the fiscal years ended June 30, 2021 and 2020 and the activities and changes in net assets for the fiscal year ended June 30, 2021.

ADVANCING A HEALTHIER WISCONSIN ENDOWMENT

Statements of Financial Position

June 30, 2021 and 2020

(in thousands)

		2021			2020
Assets					
Investments, at fair value:					
Spendable income funds	\$	80,094	\$		63,918
Endowed funds		478,301			375,809
<hr/>					
Total investments, at fair value		558,395			439,727
<hr/>					
Total assets	\$	558,395	\$		439,727
<hr/>					
Liabilities and Net Assets					
Liabilities					
Due to The Medical College of Wisconsin, Inc.	\$	98	\$		448
<hr/>					
Total liabilities		98			448
<hr/>					
Net assets with donor restrictions	\$	558,297	\$		439,279
<hr/>					
Total liabilities and net assets	\$	558,395	\$		439,727

ADVANCING A HEALTHIER WISCONSIN ENDOWMENT

Statements of Activities and Changes in Net Assets

For the Fiscal Year Ended June 30, 2021

(in thousands)

	HWPP*		REP**		TOTAL
Changes in net assets without donor restrictions:					
Net assets with donor restrictions released from restrictions	\$	6,862	\$	14,676	\$ 21,538
Program Expenditures					
Faculty salaries		671		4,046	4,717
Staff salaries		801		4,864	5,665
Fringe benefits		322		1,902	2,224
Services, supplies, and other		218		3,864	4,082
Payments to community partners		4,850		-	4,850
Total expenditures	\$	6,862	\$	14,676	\$ 21,538
Increase in net assets without donor restrictions		-		-	-
Change in net assets without donor restrictions	\$	6,862	\$	14,676	\$ 21,538
Changes in net assets with donor restrictions:					
Investment return	\$	86,117	\$	54,439	\$ 140,556
Net assets released from restrictions		(6,862)		(14,676)	(21,538)
Increase in net assets with donor restrictions		79,255		39,763	119,018
Net assets with donor restrictions at beginning of year	\$	184,671	\$	254,608	\$ 439,279
Net assets with donor restrictions at end of year	\$	263,926	\$	294,371	\$ 558,297

*Healthier Wisconsin Partnership Program

**Research and Education Program

ADVANCING A HEALTHIER WISCONSIN
For the Fiscal Year Ended June 30, 2021
(in thousands)

	GRANTS AWARDED ¹		GRANT EXPENDITURES ²		AMOUNT LAPSED	AMOUNT REMAINING TO BE SPENT
Grants Awarded from Inception to June 30, 2020:						
Healthier Wisconsin Partnership Program	\$	81,144	\$	61,191	\$ 4,819	\$ 15,134
Research and Education Program		197,357		135,831	14,095	47,431
Program Development by AHW Staff		5,033		3,291	1,501	241
SUBTOTAL	\$	283,534	\$	200,313	\$ 20,415	\$ 62,806
Grants Awarded from July 1, 2020 to June 30, 2021:						
Healthier Wisconsin Partnership Program	\$	10,178	\$	6,148	\$ 48	\$ 3,982
Research and Education Program		20,805		13,892	674	6,239
Program Development by AHW Staff		6,418		3,375	1,495	1,548
SUBTOTAL	\$	37,401	\$	23,415	\$ 2,217	\$ 11,769
Outstanding commitments at June 30, 2021:	\$	320,935	\$	223,728	\$ 22,632	\$ 74,575

¹ Reflects grants awarded net of grant reductions made due to the economic recession that began in December 2007

² Reflects life-to-date expenditures related to grants awarded

OUR TEAM

LEADERSHIP



Jesse M. Ehrenfeld, MD, MPH
Senior Associate Dean and Director
Advancing a Healthier Wisconsin Endowment
Professor, Anesthesiology
MCW

Ugwuji N. Maduekwe, MD, MMSc, MPH
Deputy Director,
Advancing a Healthier Wisconsin Endowment
Associate Professor, Surgery
MCW



STAFF

Kate Beadle
Grant Compliance Coordinator

Laura Bennett
Communications Specialist

Sarah Deering
Communications & Engagement
Director

Christina Ellis, MS
Program Director – Strategic
Investments

Julia Enright
Grant Compliance Coordinator

Jessica Herzog, MA
Program Manager

Amy Homel, MS
Administrator

Autum Kowalczyk, MBA
Compliance Business Manager

Mark McNally, PhD
AHW Scientific Consultant – Basic
Science

Tim Meister, MA
Program Manager

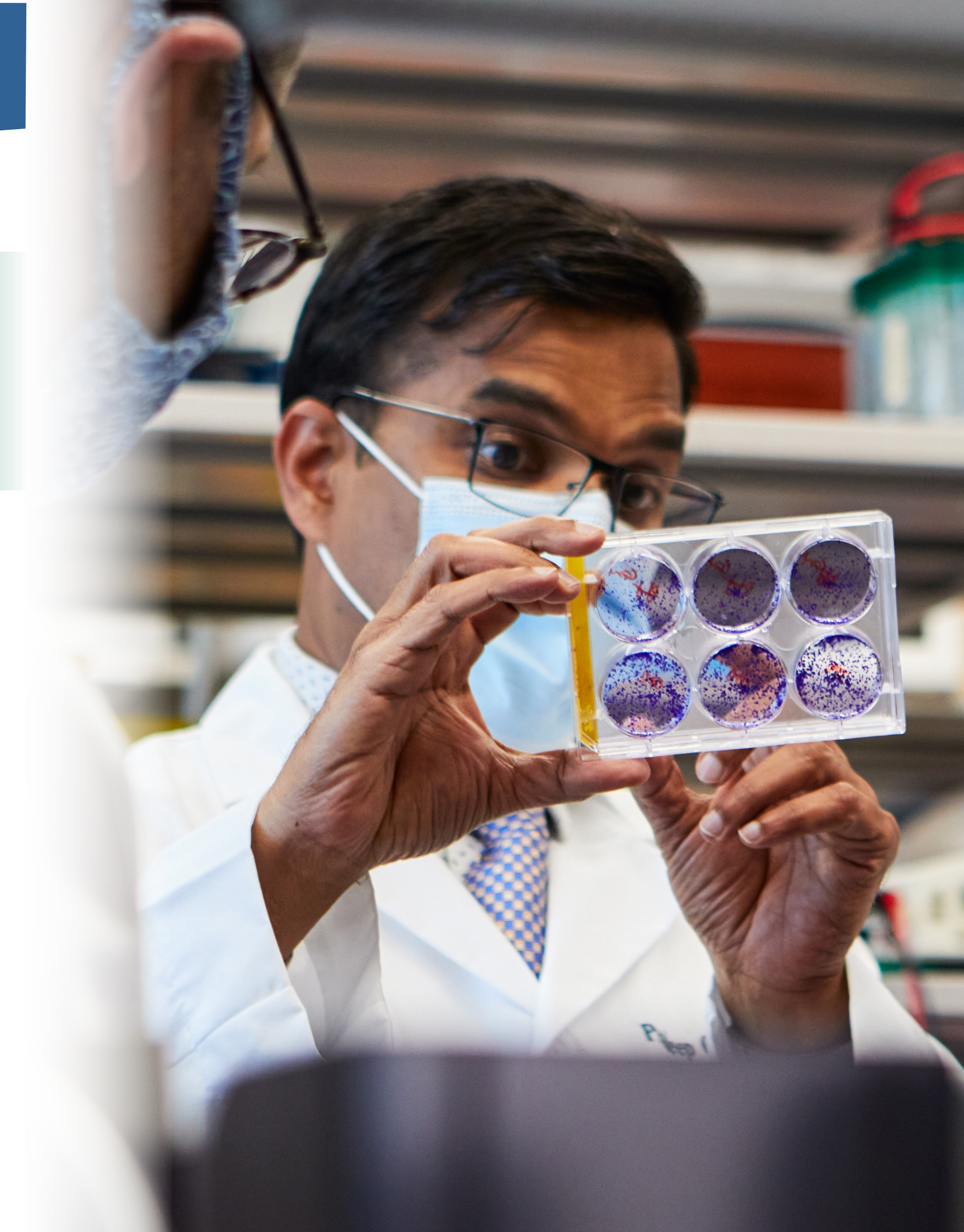
Yumari Ortiz, MBA
Program Coordinator

Liliana Pezzin, PhD, JD
AHW Scientific Consultant – Clinical/
Population Science

Abby Sokol-Roberts
Salesforce Administrator

Tracy Wilson, MPH
Program Manager

Nikia Woodard, MS
Program Coordinator







Advancing a Healthier Wisconsin Endowment
Medical College of Wisconsin
8701 Watertown Plank Road
Milwaukee, WI 53226

(414) 955-4350
ahw@mcw.edu
ahwendowment.org

@ahwendowment

